

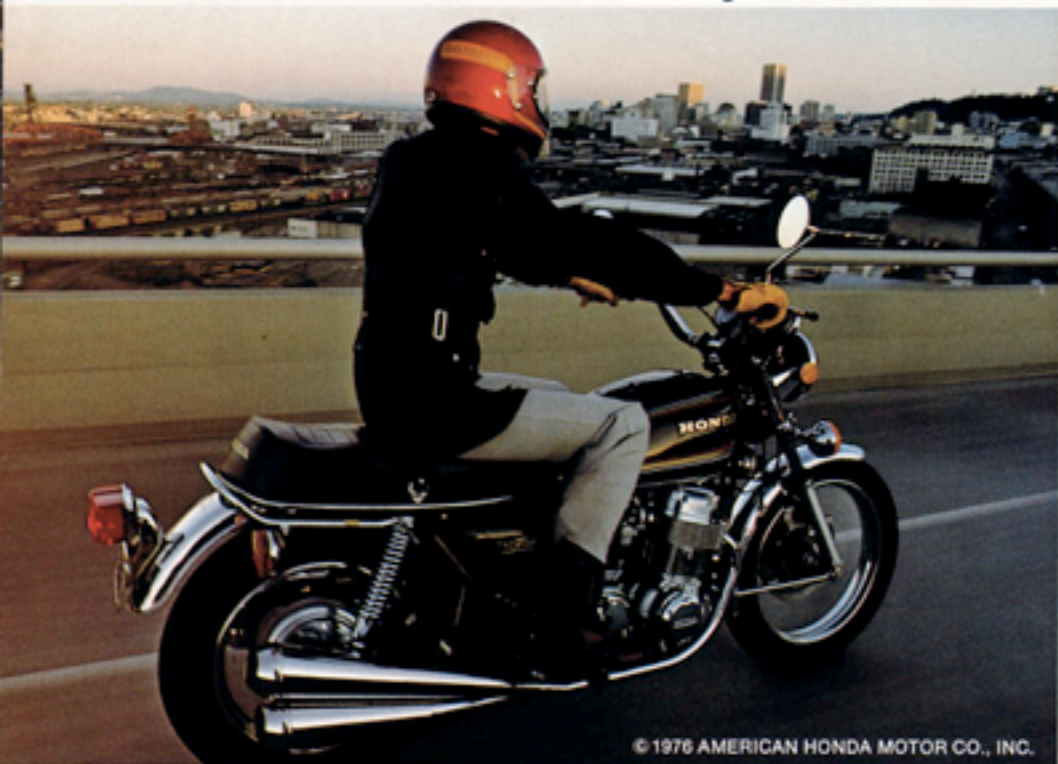


**CB-750K/550K**

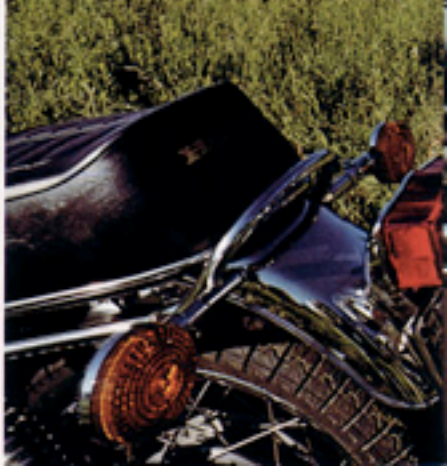
**TO GO THIS WAY,**



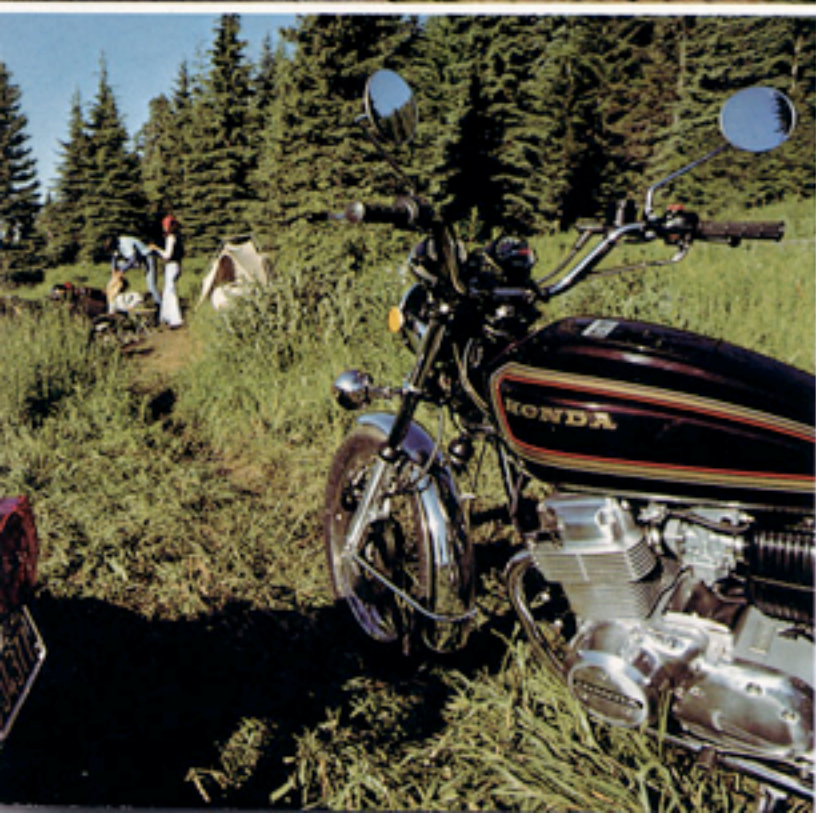
# OR THIS WAY, OR THIS WAY,



© 1976 AMERICAN HONDA MOTOR CO., INC.



# OR THIS WAY, OR THIS WAY,



# THIS IS THE ONE

Newly-designed saddles with "two-stage" foam padding for increased comfort. Saddle shape has been scientifically designed for long-haul comfort.

A new 5-gallon tank delivers extended range for long-distance touring. The filler cap is located under a lockable

Four seamless mufflers for clean streamlined good looks. The mufflers are also quieter and more efficient for 1977.

New wide rim steel wheels mount 3.50H19 tire up front and 4.50H17A rear for improved traction and handling.

New easy-mount center stand.

